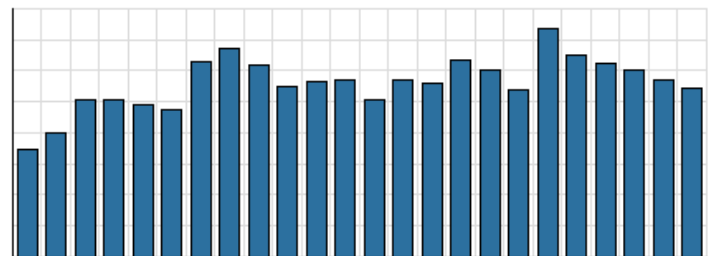


Monthly Stats Brief Narrative

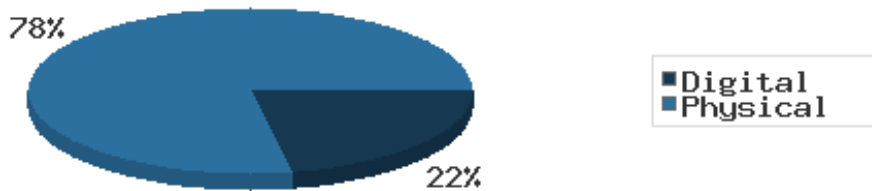
Through November 2022, the number of patrons entering our buildings greatly increased system-wide compared to this same time year-to-date the previous year. Combined physical and digital use of library materials increased year-to-date compared to 2021. About 11% of our registered cardholders checked out a physical item this past month, while about 4% of registered cardholders checked out a digital item.

District Total Checkouts Over 24 Months



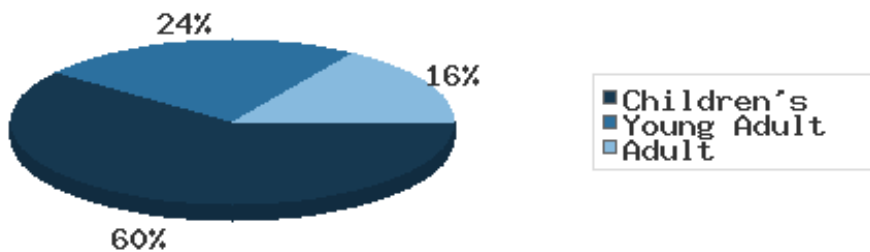
Digital usage has comprised about 22% of total materials use year-to-date through November 2022, and digital usage decreased from this time in 2021.

Digital vs. Physical Circulation YTD



In November 2022, BDL patrons saved \$94,249.41 by checking out 8,546 physical items from the library. Our programming for all ages and our digital services further increase the library's value to the community, bringing the total estimated value to \$123,169.32.

Programs Offered in 2022 YTD



Compared to this time year-to-date 2021, the number of programs BDL offered has greatly increased. Attendance at programs increased over this same period.

See the full statistical report, starting on the next page, for details and more graphs. The most up-to-date stats are always available online and interactive at <https://www.BranchDistrictLibrary.org/stats>.

Attendance

November 2022

	BDL Monthly Total	BDL YTD	BDL Year End (Year-over-Year Change)				
			2021	2020	2019	2018	2017
Attendance	7,645	97,539 (+50%)	76,553 (+21%)	63,336 (-66%)	183,677 (-4%)	191,866 (-1%)	193,922 (-4%)
Curbside Service Uses (Tracking since 2020)	9	128	14	0	0	0	0
Hours Open	744.00	10,081.50 (+4%)	10,655.00 (+49%)	7,132.50 (-37%)	11,250.25 (-9%)	12,387.00 (+14%)	10,869.15 (0%)
Number of Hours Scheduled Open Each Week (Tracking Since 1/2018)	241.00		239.00 (+1%)	237.00 (-2%)	241.00 (-2%)	245.00	0.00

Patrons

November 2022

	BDL Monthly Total	BDL YTD	BDL Year End (Year-over-Year Change)				
			2021	2020	2019	2018	2017
Population in our Service Area (Tracking Since 2018)	46,464	46,327 (avg) (+3%)	44,996 (avg) (+0%)	44,931 (avg) (0%)	45,093 (avg) (0%)	45,113 (avg)	0 (avg)
Library Card Holders	14,262	15,888 (avg) (-29%)	22,337 (avg) (+5%)	21,365 (avg) (+4%)	20,493 (avg) (-4%)	21,350 (avg) (-16%)	25,346 (avg) (+3%)
Patrons Who Checked Out a Physical Item	1,628	1,737 (avg) (+29%)	1,359 (avg) (+23%)	1,102 (avg) (-48%)	2,136 (avg) (-2%)	2,180 (avg) (-5%)	2,305 (avg) (-1%)
New Library Card Holders Added	98	1,086 (+64%)	732 (-44%)	1,304 (+111%)	618 (-39%)	1,021 (+21%)	844 (-15%)
In-House Holds Filled for Our Library Card Holders	907	9,499 (-3%)	10,696 (+13%)	9,467 (-10%)	10,527 (-4%)	10,987 (-6%)	11,650 (+12%)
Active Hoopla Users	320	313 (avg) (+7%)	291 (avg) (-10%)	322 (avg) (+11%)	290 (avg) (+14%)	255 (avg) (+50%)	170 (avg) (+92%)
Active OverDrive Users	250	248 (avg) (+11%)	223 (avg) (-5%)	234 (avg) (+10%)	213 (avg) (+18%)	180 (avg) (+27%)	143 (avg) (-1%)

Physical Collection

Tracking Item-Type Breakdown Since 8/2017

November 2022

	BDL Monthly Total	BDL YTD	BDL Year End (Year-over-Year Change)				
			2021	2020	2019	2018	2017
Physical Books and All other Print Materials in the Catalog	93,751		91,417 (+0%)	91,278 (-8%)	98,689 (-2%)	100,253 (0%)	100,293
Physical Audiobooks in the Catalog	1,977		1,875 (-4%)	1,949 (+9%)	1,783 (-5%)	1,881 (+2%)	1,852
Physical Video Materials in the Catalog	12,097		11,646 (+3%)	11,352 (-1%)	11,460 (+8%)	10,579 (+1%)	10,519
Physical Music Recordings in the Catalog	42		42 (-76%)	178 (+12%)	159 (-53%)	337 (-2%)	345
TOTAL Physical Items in the Catalog	107,867		104,980 (0%)	105,257 (-6%)	112,053 (-1%)	113,050 (+0%)	113,009 (-11%)

Digital Collection

Tracking Since 8/2017

November 2022

	BDL Monthly Total	BDL YTD	BDL Year End (Year-over-Year Change)				
			2021	2020	2019	2018	2017
Ebooks in All Digital Collections	769,519		648,146 (+35%)	480,691 (+30%)	370,666 (+21%)	306,595 (+33%)	230,178
Audiobooks in All Digital Collections	182,794		162,946 (+26%)	128,892 (+50%)	86,004 (+19%)	71,995 (+36%)	52,833
Video Materials in All Digital Collections	25,950		22,520 (+27%)	17,791 (+9%)	16,267 (+14%)	14,229 (-10%)	15,767
Music Recordings in All Digital Collections	348,705		21,347 (-92%)	273,294 (+1%)	271,614 (+13%)	239,705 (-14%)	280,259
Periodicals in All Digital Collections	4,545		3,881 (+6%)	3,668	0	0	0
TOTAL of All Digital Collections	1,331,513		858,840 (-5%)	904,336 (+21%)	744,551 (+18%)	632,524 (+9%)	579,037

Total Collection

Tracking Since 8/2017

November 2022

	BDL Monthly Total	BDL YTD	BDL Year End (Year-over-Year Change)				
			2021	2020	2019	2018	2017
Combined Physical Items	107,867		104,980 (0%)	105,257 (-6%)	112,053 (-1%)	113,050 (+0%)	113,009 (-11%)
Combined Digital Collections	1,331,513		858,840 (-5%)	904,336 (+21%)	744,551 (+18%)	632,524 (+9%)	579,037
TOTAL of all Collections	1,434,835		959,939 (-5%)	1,009,593 (+18%)	856,604 (+15%)	745,574 (+8%)	692,046 (+447%)

Use of Physical Items

November 2022

	BDL Monthly Total	BDL YTD	BDL Year End (Year-over-Year Change)				
			2021	2020	2019	2018	2017
Checkouts of Cataloged Items	6,350	76,264 (+21%)	68,460 (+31%)	52,227 (-53%)	110,285 (-3%)	113,128 (-6%)	120,916 (+2%)
Renewals of Cataloged Items	637	9,698 (+26%)	8,639 (+20%)	7,181 (-47%)	13,490 (-1%)	13,607 (-8%)	14,804 (-4%)
Items Used in the Library But Not Checked Out	324	4,218 (+89%)	2,350 (-63%)	6,404 (+54%)	4,166 (+49%)	2,803 (-8%)	3,050 (+126%)
Checkouts of Uncataloged Items	148	1,026 (-23%)	1,505 (+50%)	1,001 (-70%)	3,294 (-16%)	3,904 (+38%)	2,839 (-38%)
Requests from BDL Patrons for Items at Other MeLCat Libraries, Actually Fulfilled	563	6,247 (-4%)	6,981 (+52%)	4,599 (-53%)	9,873 (+1%)	9,777 (+20%)	8,169 (+15%)
Requests from Other MeLCat Libraries for Items at BDL, Actually Fulfilled	524	5,680 (+8%)	5,712 (+80%)	3,175 (-58%)	7,582 (-23%)	9,810 (+25%)	7,867 (+11%)
TOTAL Use of Physical Items	8,546	103,133 (+20%)	93,647 (+26%)	74,587 (-50%)	148,690 (-3%)	153,029 (-3%)	157,645 (+2%)

Use of Digital Resources

November 2022

	BDL Monthly Total	BDL YTD	BDL Year End (Year-over-Year Change)				
			2021	2020	2019	2018	2017
OverDrive Checkouts	1,060	12,303 (+1%)	13,294 (+2%)	13,051 (+21%)	10,822 (+14%)	9,501 (+21%)	7,823 (+4%)
Hoopla Checkouts	1,076	12,109 (+5%)	12,507 (-8%)	13,604 (+9%)	12,530 (-2%)	12,796 (+20%)	10,669 (+96%)
All Other Digital Services	209	5,016 (-48%)	10,131 (+42%)	7,140 (-33%)	10,604 (+11%)	9,572 (-72%)	34,047 (-46%)
TOTAL Use of Digital Resources	2,345	29,428 (-13%)	36,284 (+4%)	34,861 (+3%)	33,956 (+7%)	31,869 (-39%)	52,539 (-31%)

Total Item Usage

November 2022

	BDL Monthly Total	BDL YTD	BDL Year End (Year-over-Year Change)				
			2021	2020	2019	2018	2017
Combined Checkouts of Physical Items	8,546	103,133 (+20%)	93,647 (+26%)	74,587 (-50%)	148,690 (-3%)	153,029 (-3%)	157,645 (+2%)
Combined Use of Digital Resources	2,345	29,428 (-13%)	36,284 (+4%)	34,861 (+3%)	33,956 (+7%)	31,869 (-39%)	52,539 (-31%)
TOTAL Uses of All BDL Items	10,891	132,561 (+11%)	129,931 (+19%)	109,448 (-40%)	182,646 (-1%)	184,898 (-12%)	210,184 (-9%)

Cataloging

November 2022

	BDL Monthly Total	BDL YTD	BDL Year End (Year-over-Year Change)				
			2021	2020	2019	2018	2017
Physical Items Added to the Catalog	872	9,501 (-15%)	11,665 (+17%)	9,938 (+2%)	9,719 (-12%)	11,056 (+0%)	11,009 (-1%)
Physical Items Deleted from the Catalog	194	6,724 (-58%)	16,482 (-3%)	17,003 (+58%)	10,769 (-2%)	10,941 (-55%)	24,366 (+53%)

Reference Questions

November 2022

	BDL Monthly Total	BDL YTD	BDL Year End (Year-over-Year Change)				
			2021	2020	2019	2018	2017
General Reference Questions in Person	1,002	9,928 (+28%)	8,431 (+94%)	4,347 (-50%)	8,748 (+32%)	6,641 (-12%)	7,537 (+20%)
Questions via Telephone Calls	616	5,650 (+6%)	5,765 (+26%)	4,559 (+11%)	4,111 (+6%)	3,866 (-24%)	5,079 (+10%)
Reference Questions Delivered Online	16	204 (-22%)	275 (+13%)	243 (-14%)	281 (+85%)	152 (-35%)	233 (-23%)
In-Person Questions on Computer or Internet Use	320	3,721 (+11%)	3,675 (+33%)	2,767 (-63%)	7,505 (+6%)	7,068 (-3%)	7,285 (+11%)
In-Person Questions about Our Online Databases	12	147 (+8%)	142 (+33%)	107 (-69%)	349 (-15%)	409 (+13%)	363 (+114%)
In-Person Tax Form Questions	2	208 (-10%)	233 (-19%)	286 (-12%)	326 (-37%)	518 (+5%)	493 (+4%)
TOTAL of All Reference Questions	1,968	19,858 (+16%)	18,521 (+50%)	12,309 (-42%)	21,320 (+14%)	18,654 (-11%)	20,990 (+14%)

Notary Services

Began 9/2017

November 2022

	BDL Monthly Total	BDL YTD	BDL Year End (Year-over-Year Change)				
			2021	2020	2019	2018	2017
Patrons Who Used our Free Notary Services	13	110 (+80%)	69 (+50%)	46 (-52%)	95 (+44%)	66 (+371%)	14
Documents Notarized	77	227 (+123%)	112 (+107%)	54 (-56%)	124 (+85%)	67 (+253%)	19

MeLCat

November 2022

	BDL Monthly Total	BDL YTD	BDL Year End (Year-over-Year Change)				
			2021	2020	2019	2018	2017
Requests from BDL Patrons for Items at Other MeLCat Libraries	589	6,538 (-5%)	7,375 (+47%)	5,026 (-52%)	10,538 (+1%)	10,462 (+20%)	8,699 (+14%)
Requests from BDL Patrons for Items at Other MeLCat Libraries, Actually Fulfilled	563	6,247 (-4%)	6,981 (+52%)	4,599 (-53%)	9,873 (+1%)	9,777 (+20%)	8,169 (+15%)
Requests from Other MeLCat Libraries for Items at BDL	526	5,669 (+1%)	6,067 (+49%)	4,067 (-52%)	8,405 (-18%)	10,296 (+29%)	7,994 (+13%)
Requests from Other MeLCat Libraries for Items at BDL, Actually Fulfilled	524	5,680 (+8%)	5,712 (+80%)	3,175 (-58%)	7,582 (-23%)	9,810 (+25%)	7,867 (+11%)

Programs Held

November 2022

	BDL Monthly Total	BDL YTD	BDL Year End (Year-over-Year Change)				
			2021	2020	2019	2018	2017
Early Childhood Literacy Programs Held (Tracking since 2021)	38	194 (+81%)	116	0	0	0	0
Juvenile Programs Held	60	473 (+98%)	290 (-47%)	551 (-31%)	804 (+10%)	730 (+1%)	720 (+19%)
Young Adult Programs Held	15	216 (+96%)	131 (-5%)	138 (-55%)	304 (-10%)	338 (+41%)	239 (+47%)
Adult Programs Held	15	119 (+27%)	114 (-56%)	257 (+54%)	167 (+23%)	136 (-7%)	146 (-34%)
All-Ages Programs Held (Tracking since 2021)	21	68 (+3%)	80	0	0	0	0
Early Childhood Literacy Summer Reading Programs Held (Tracking since 2021)	0	41 (+356%)	9	0	0	0	0
Juvenile Summer Reading Events Held	0	141 (+47%)	96	0	173 (+52%)	114 (+20%)	95 (+7%)
Young Adult Summer Reading Events Held	0	27 (+8%)	25	0	61 (+24%)	49 (-14%)	57 (+97%)
Adult Summer Reading Events Held	0	28 (+4%)	27	0	17 (+467%)	3	0
All-Ages Summer Reading Programs Held (Tracking since 2021)	0	19 (-27%)	26	0	0	0	0
Computer Classes Held	0	11 (+1,000%)	1	1 (-99%)	81 (+305%)	20 (-9%)	22 (+57%)
TOTAL of All Programs	149	1,337 (+67%)	915 (-3%)	947 (-41%)	1,607 (+16%)	1,390 (+9%)	1,279 (+14%)

Program Attendance

November 2022

	BDL Monthly Total	BDL YTD	BDL Year End (Year-over-Year Change)				
			2021	2020	2019	2018	2017
Attendees at Early Childhood Literacy Programs (Tracking since 2021)	523	1,877 (+45%)	1,389	0	0	0	0
Attendees at Juvenile Programs	455	4,873 (+37%)	4,270 (-83%)	25,317 (+73%)	14,654 (-7%)	15,725 (+2%)	15,351 (+48%)
Attendees at Young Adult Programs	87	1,388 (+89%)	817 (-75%)	3,204 (+29%)	2,489 (-23%)	3,218 (-15%)	3,806 (+276%)
Attendees at Adult Programs	139	934 (-50%)	1,971 (-88%)	16,263 (+519%)	2,627 (+33%)	1,970 (0%)	1,979 (-3%)
Attendees at All-Ages Programs (Tracking since 2021)	334	3,297 (-23%)	4,547	0	0	0	0
Attendees at Early Childhood Literacy Summer Reading Programs (Tracking since 2021)	0	424 (+190%)	146	0	0	0	0
Attendees at Juvenile Summer Reading Events	0	3,415 (+90%)	1,798	0	4,186 (+8%)	3,864 (+24%)	3,116 (-20%)
Attendees at Young Adult Summer Reading Events	0	361 (+99%)	181	0	279 (-16%)	333 (-50%)	671 (+127%)
Attendees at Adult Summer Reading Events	0	231 (+29%)	179	0	310 (+265%)	85	0
Attendees at All-Ages Summer Programs (Tracking since 2021)	0	1,226 (+68%)	730	0	0	0	0
Attendees at Computer Classes	0	12 (+1,100%)	1	0	26 (+30%)	20 (-5%)	21 (+75%)
TOTAL of All Program Attendance	1,538	18,038 (+22%)	16,029 (-64%)	44,784 (+82%)	24,571 (-3%)	25,215 (+1%)	24,944 (+41%)

Summer Reading Overview

November 2022

	BDL Monthly Total	BDL YTD	BDL Year End (Year-over-Year Change)				
			2021	2020	2019	2018	2017
Juveniles Signed Up for Summer Reading Program	0	527 (+29%)	407 (+347%)	91 (-87%)	711 (-5%)	747 (-35%)	1,153 (+19%)
Young Adults Signed up for Summer Reading Program	0	336 (+336%)	77 (+166%)	29 (-78%)	134 (-65%)	378 (-2%)	385 (+241%)
Adults Signed Up for Summer Reading Program	0	145 (+19%)	122 (+270%)	33 (-79%)	159 (-36%)	248 (+112%)	117 (+36%)
Juveniles who Completed Summer Reading Program	0	355 (+61%)	220 (+142%)	91 (-76%)	385 (+48%)	260 (-50%)	518 (+13%)
Young Adults who Completed Summer Reading Program	0	50 (+32%)	38 (+31%)	29 (-63%)	79 (-41%)	135 (-50%)	268 (+332%)
Adults who Completed Summer Reading Program	0	31 (+3%)	30 (-9%)	33 (-72%)	118 (-28%)	165 (+72%)	96 (+60%)
Juvenile Summer Reading Events Held	0	141 (+47%)	96	0	173 (+52%)	114 (+20%)	95 (+7%)
Young Adult Summer Reading Events Held	0	27 (+8%)	25	0	61 (+24%)	49 (-14%)	57 (+97%)
Adult Summer Reading Events Held	0	28 (+4%)	27	0	17 (+467%)	3	0
Attendees at Juvenile Summer Reading Events	0	3,415 (+90%)	1,798	0	4,186 (+8%)	3,864 (+24%)	3,116 (-20%)
Attendees at Young Adult Summer Reading Events	0	361 (+99%)	181	0	279 (-16%)	333 (-50%)	671 (+127%)
Attendees at Adult Summer Reading Events	0	231 (+29%)	179	0	310 (+265%)	85	0

Summer Reading Program Signups

November 2022

	BDL Monthly Total	BDL YTD	BDL Year End (Year-over-Year Change)				
			2021	2020	2019	2018	2017
Juveniles Signed Up for Summer Reading Program	0	527 (+29%)	407 (+347%)	91 (-87%)	711 (-5%)	747 (-35%)	1,153 (+19%)
Young Adults Signed up for Summer Reading Program	0	336 (+336%)	77 (+166%)	29 (-78%)	134 (-65%)	378 (-2%)	385 (+241%)
Adults Signed Up for Summer Reading Program	0	145 (+19%)	122 (+270%)	33 (-79%)	159 (-36%)	248 (+112%)	117 (+36%)
TOTAL Summer Reading Program Signups	0	1,008 (+66%)	606 (+296%)	153 (-85%)	1,004 (-27%)	1,373 (-17%)	1,655 (+42%)

Summer Reading Program Completions

November 2022

	BDL Monthly Total	BDL YTD	BDL Year End (Year-over-Year Change)				
			2021	2020	2019	2018	2017
Juveniles who Completed Summer Reading Program	0	355 (+61%)	220 (+142%)	91 (-76%)	385 (+48%)	260 (-50%)	518 (+13%)
Young Adults who Completed Summer Reading Program	0	50 (+32%)	38 (+31%)	29 (-63%)	79 (-41%)	135 (-50%)	268 (+332%)
Adults who Completed Summer Reading Program	0	31 (+3%)	30 (-9%)	33 (-72%)	118 (-28%)	165 (+72%)	96 (+60%)
TOTAL Summer Reading Program Completions	0	436 (+51%)	288 (+88%)	153 (-74%)	582 (+4%)	560 (-37%)	882 (+52%)

Library-Provided Computer Services

November 2022

	BDL Monthly Total	BDL YTD	BDL Year End (Year-over-Year Change)				
			2021	2020	2019	2018	2017
One-hour sessions on Library Wifi	40,685	325,764 (+22%)	290,877 (+2%)	284,892 (-40%)	474,750 (+2%)	465,219 (+9%)	425,714 (+4%)
Desktop, Laptop, and Tablet Computers Available for Public Use	92		92 (+5%)	88	88 (-1%)	89 (+22%)	73
Sessions on Library-Provided Computers	1,043	16,538 (+63%)	11,926 (+24%)	9,604 (-73%)	35,720 (-22%)	45,687 (+3%)	44,181 (+6%)
Hours Library-Provided Computers Used (Tracking Since 2018)	508.22	10,351.77 (+75%)	6,735.18 (+12%)	6,031.58 (-75%)	24,280.36 (-2%)	24,701.55	0.00
Desktop, Laptop, and Tablet Computers Available for Staff Use	53		55 (+6%)	52	52 (+4%)	50 (+22%)	41

Website Stats

November 2022

	BDL Monthly Total	BDL YTD	BDL Year End (Year-over-Year Change)				
			2021	2020	2019	2018	2017
Monthly Website Sessions	3,499	40,221 (-8%)	46,481 (+12%)	41,586 (-28%)	58,161 (+28%)	45,594 (-38%)	73,326 (-2%)
Monthly Website Page Views	5,933	74,686 (-32%)	116,164 (+26%)	92,094 (-29%)	129,778 (+9%)	118,634 (-33%)	177,799 (-2%)

Faxes, Prints, and Sales

November 2022

	BDL Monthly Total	BDL YTD	BDL Year End (Year-over-Year Change)				
			2021	2020	2019	2018	2017
Fax Pages Received	5	184 (+56%)	141 (-5%)	149 (-57%)	350 (-16%)	419 (+61%)	260 (+19%)
Fax Pages Sent	603	6,537 (+10%)	6,515 (+66%)	3,935 (-59%)	9,524 (+3%)	9,249 (+138%)	3,879 (+123%)
Free Prints for Job Seekers, Students, etc.	1,085	12,250 (+315%)	3,222 (+195%)	1,091 (-61%)	2,796 (-23%)	3,631 (+16%)	3,128 (+9%)
Black and White Patron Prints (Tracking Since 6/2016)	5,862	56,624 (+11%)	55,206 (+66%)	33,177 (-56%)	75,818 (-6%)	81,016 (+7%)	75,606 (+113%)
Color Patron Prints (Tracking Since 6/2016)	850	9,411 (+10%)	9,731 (+107%)	4,709 (-58%)	11,299 (-8%)	12,285 (+20%)	10,253 (+154%)
Flash Drives Sold (Tracking Since 6/2016)	0	25 (+79%)	16 (-11%)	18 (-51%)	37 (-10%)	41 (-27%)	56 (+4%)
Earbuds Sold (Tracking Since 6/2016)	11	126 (+15%)	122 (-7%)	131 (-72%)	462 (-14%)	538 (+29%)	416 (+151%)

Fines and Fees

Overdue Fines Dropped in 2017

November 2022

	BDL Monthly Total	BDL YTD	BDL Year End (Year-over-Year Change)				
			2021	2020	2019	2018	2017
Fines and Fees Payments Received	\$ 31.99	\$ 1,275.33 (-5%)	\$ 1,409.59 (-18%)	\$ 1,717.01 (-44%)	\$ 3,092.62 (+28%)	\$ 2,412.73 (-68%)	\$ 7,628.31 (-24%)
Outstanding Fines and Fees	\$ 14,284.80		8,576.40 (-84%)	53,362.56 (-4%)	55,588.42 (0%)	55,850.27 (-34%)	84,232.33 (-63%)

Debt Collections

Unique Management Services, Inc.
Tracking Since 2014

November 2022

	BDL Monthly Total	BDL YTD	BDL Year End (Year-over-Year Change)				
			2021	2020	2019	2018	2017
Fine Payments as a Result of Collection Agency's Efforts	\$ 0.00	\$ 0.00	\$ 0.00	\$ 0.00	\$ 268.00 (-94%)	\$ 4,183.45 (+1,727%)	\$ 229.00 (-76%)
Library Materials Returned as a Result of Collection Agency's Efforts	\$ 0.00	\$ 0.00	\$ 0.00	\$ 0.00	\$ 0.00	\$ 462.00 (-48%)	\$ 888.95 (-33%)
What We Paid Collection Agency for Their Services	\$ 0.00	\$ 0.00	\$ 0.00	\$ 0.00	\$ 134.10 (-75%)	\$ 528.66 (-5%)	\$ 558.08 (-45%)

Value to Our Service Area

Visit <https://www.BranchDistrictLibrary.org/value>
to learn how we determine these numbers.

November 2022

	BDL Monthly Total	BDL YTD	BDL Year End (Year-over-Year Change)				
			2021	2020	2019	2018	2017
Value from Physical Item Checkouts	\$ 94,249.41	\$ 1,170,442.00 (+22%)	\$ 1,048,840.66 (+27%)	\$ 822,979.52 (-53%)	\$ 1,755,554.08 (-7%)	\$ 1,888,907.75 (-12%)	\$ 2,135,671.28 (+0%)
Value from Attending Programs (Tracking Since 1/2018)	\$ 10,766.00	\$ 114,303.00 (+59%)	\$ 78,390.00 (-38%)	\$ 126,690.00 (+7%)	\$ 118,485.00 (-6%)	\$ 125,795.00	\$ 0.00
Value from Fax Service (Tracking Since 1/2018)	\$ 608.00	\$ 6,424.00 (+8%)	\$ 6,534.00 (+61%)	\$ 4,056.00 (-60%)	\$ 10,205.00 (+6%)	\$ 9,668.00	\$ 0.00
Value from Free Prints (Tracking Since 1/2018)	\$ 163	\$ 1,694 (+321%)	\$ 443 (+173%)	\$ 163 (-61%)	\$ 419 (-23%)	\$ 545	\$ 0
Value from Notary Services (Tracking Since 1/2018)	\$ 65.00	\$ 540.00 (+93%)	\$ 320.00 (+42%)	\$ 225.00 (-53%)	\$ 475.00 (+44%)	\$ 330.00	\$ 0.00
Value from Digital Services (Tracking Since 1/2018)	\$ 11,725.00	\$ 147,140.00 (+9%)	\$ 145,136.00 (+5%)	\$ 138,316.00 (+2%)	\$ 135,824.00 (+7%)	\$ 127,476.00	\$ 0.00
Value from Using Library Computers (Tracking Since 1/2018)	\$ 1,524.66	\$ 31,055.31 (+75%)	\$ 20,205.54 (+12%)	\$ 18,094.74 (-75%)	\$ 72,841.08 (-2%)	\$ 74,104.66	\$ 0.00
Value from Using Library Wifi (Tracking Since 1/2018)	\$ 4,068.50	\$ 30,726.40 (+89%)	\$ 17,897.18 (-10%)	\$ 19,942.44 (-40%)	\$ 33,232.50 (+2%)	\$ 32,565.33	\$ 0.00
TOTAL Value of Free Library Services	\$ 123,169.32	\$ 1,502,324.96 (+24%)	\$ 1,317,766.78 (+17%)	\$ 1,130,466.45 (-47%)	\$ 2,127,036.06 (-6%)	\$ 2,259,391.39 (+6%)	\$ 2,135,671.28 (+0%)

Materials Expenditures

Tracking since 2018

November 2022

	BDL Monthly Total	BDL YTD	BDL Year End (Year-over-Year Change)				
			2021	2020	2019	2018	2017
Amount Spent on Books	\$ 7,005.55	\$ 98,825.01 (+1%)	\$ 108,851.89 (+27%)	\$ 85,727.68 (+12%)	\$ 76,878.30 (-18%)	\$ 93,763.50	\$ 0.00
Amount Spent on Periodicals	\$ 0.00	\$ 5,102.22 (+696%)	\$ 5,051.01 (-6%)	\$ 5,390.61 (-5%)	\$ 5,663.99 (-20%)	\$ 7,085.59	\$ 0.00
Amount Spent on Audiovisual Materials	\$ 1,569.98	\$ 11,894.66 (-18%)	\$ 23,646.40 (+39%)	\$ 16,992.04 (+13%)	\$ 15,009.96 (-17%)	\$ 17,998.47	\$ 0.00
Amount Spent on Digital Resources	\$ 2,271.74	\$ 41,818.06 (+46%)	\$ 42,439.73 (+34%)	\$ 31,708.66 (+12%)	\$ 28,412.62 (-35%)	\$ 43,798.90	\$ 0.00
TOTAL Spent on All Library Materials	\$ 10,847.27	\$ 157,639.95 (+11%)	\$ 179,989.03 (+29%)	\$ 139,818.99 (+11%)	\$ 125,964.87 (-23%)	\$ 162,646.46	\$ 0.00

Other Expenditures

Tracking since 2018

November 2022

	BDL Monthly Total	BDL YTD	BDL Year End (Year-over-Year Change)				
			2021	2020	2019	2018	2017
Total Materials Expenditures	\$ 10,847.27	\$ 157,639.95 (+11%)	\$ 179,989.03 (+29%)	\$ 139,818.99 (+11%)	\$ 125,964.87 (-23%)	\$ 162,646.46	\$ 0.00
Total Staff Expenditures	\$ 71,655.41	\$ 1,001,095.78 (+13%)	\$ 963,961.23 (+1%)	\$ 956,326.38 (-18%)	\$ 1,172,756.92 (-20%)	\$ 1,469,560.33	\$ 0.00
Expenditures in other categories	\$ 85,953.19	\$ 1,034,522.76 (+35%)	\$ 860,839.79 (+78%)	\$ 483,894.79 (+37%)	\$ 353,231.25 (-16%)	\$ 422,747.74	\$ 0.00
TOTAL Expenditures in all Categories	\$ 157,608.60	\$ 2,023,637.39 (+20%)	\$ 1,865,487.82 (+3%)	\$ 1,819,492.24 (+1%)	\$ 1,797,240.67 (-13%)	\$ 2,054,954.53	\$ 0.00

Staffing

November 2022

	BDL Monthly Total	BDL YTD	BDL Year End (Year-over-Year Change)				
			2021	2020	2019	2018	2017
Total BDL Staff	36	34 (avg)	35 (avg) (-3%)	36 (avg) (-3%)	37 (avg) (-8%)	40 (avg) (+5%)	37 (avg) (+9%)
BDL Staff with MLS Degree	5	8 (avg) (+40%)	5 (avg)	5 (avg) (+25%)	5 (avg) (-33%)	6 (avg) (+20%)	5 (avg) (+150%)
Worked Full-Time Equivalents	17.76	23.00 (avg) (+5%)	21.71 (avg) (-13%)	24.53 (avg) (-4%)	25.78 (avg) (-4%)	26.92 (avg) (+8%)	24.91 (avg) (+41%)
Hours of Specialized Training for Staff (Tracking Since 1/2019)	91	729 (-1%)	763 (-35%)	1,170 (+119%)	534	0	0
Hours Volunteers Worked at the Library (Tracking Since 1/2019)	0	153 (+125%)	128 (+228%)	39 (-96%)	1,065	0	0

Outreach Services

Began 2018

November 2022

	BDL Monthly Total	BDL YTD	BDL Year End (Year-over-Year Change)				
			2021	2020	2019	2018	2017
Number of Patrons Served by Outreach Services	10	116 (+5%)	120 (+186%)	42 (-40%)	70 (-8%)	76 (+2,433%)	3
Number of Items Delivered to Outreach Patrons	37	456 (-11%)	548 (+126%)	242 (+10%)	220 (-64%)	606 (+2,231%)	26

Coldwater Branch Heritage Room

Stats part of Coldwater Branch totals above; shown here for convenience.

November 2022

	Heritage Room	BDL YTD	BDL Year End (Year-over-Year Change)				
			2021	2020	2019	2018	2017
Heritage Room Attendance	32	374 (+96%)	202 (+92%)	105 (-78%)	484 (-34%)	736 (+12%)	658 (-7%)
In-Person Reference Questions	16	144 (+132%)	74 (-8%)	80 (-81%)	412 (-42%)	708 (+29%)	550 (+664%)
Reference Telephone Calls	15	122 (+13%)	115 (+92%)	60 (-74%)	232 (-16%)	277 (-36%)	433 (+15%)
Online Reference Questions	6	29 (-29%)	42 (+24%)	34 (-48%)	65 (+8%)	60 (-5%)	63 (-24%)

Coldwater Branch Kids' Place

Stats part of Coldwater Branch totals above; shown here for convenience.
Tracking separately since April 2019.

November 2022

	Kids' Place	BDL YTD	BDL Year End (Year-over-Year Change)				
			2021	2020	2019	2018	2017
Kids' Place Attendance	450	6,303 (+63%)	4,445 (+86%)	2,385 (-75%)	9,710	0	0
In-Person Reference Questions	177	1,438 (+115%)	740 (+227%)	226 (-61%)	575	0	0
Reference Telephone Calls	15	146 (-26%)	214 (+37%)	156 (-30%)	224	0	0
Online Reference Questions	0	0	2	0	0	0	0

Coldwater Branch Teen Space

Stats part of Coldwater Branch totals above; shown here for convenience.
Tracking separately since April 2019.

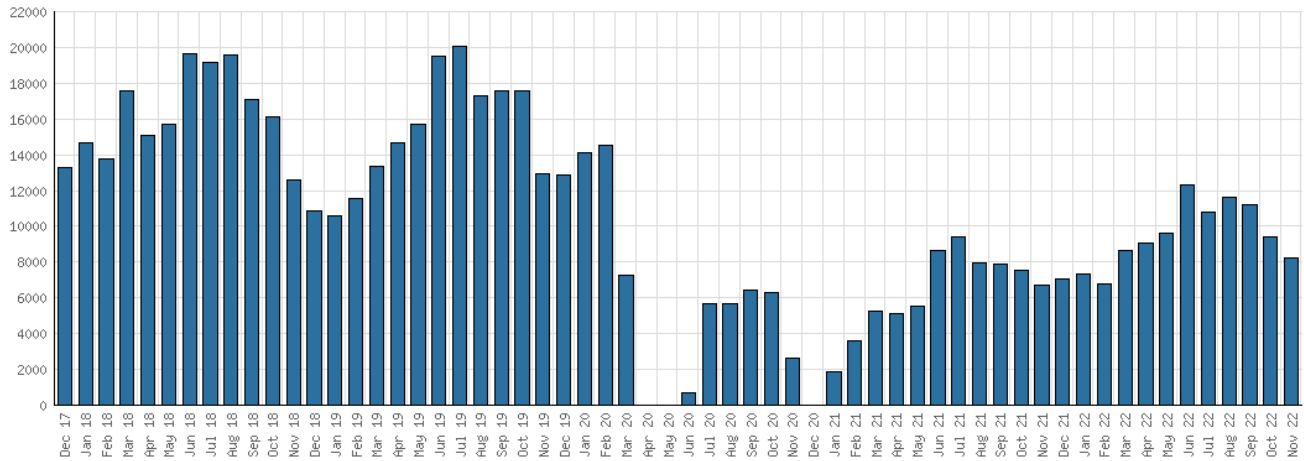
November 2022

	Teen Space	BDL YTD	BDL Year End (Year-over-Year Change)				
			2021	2020	2019	2018	2017
Teen Space Attendance	103	1,140 (+67%)	706 (-16%)	845 (-80%)	4,172	0	0
In-Person Reference Questions	0	67 (+509%)	13 (+225%)	4 (-96%)	93	0	0
Reference Telephone Calls	0	1	0	0	0	0	0
Online Reference Questions	0	0	0	0	0	0	0

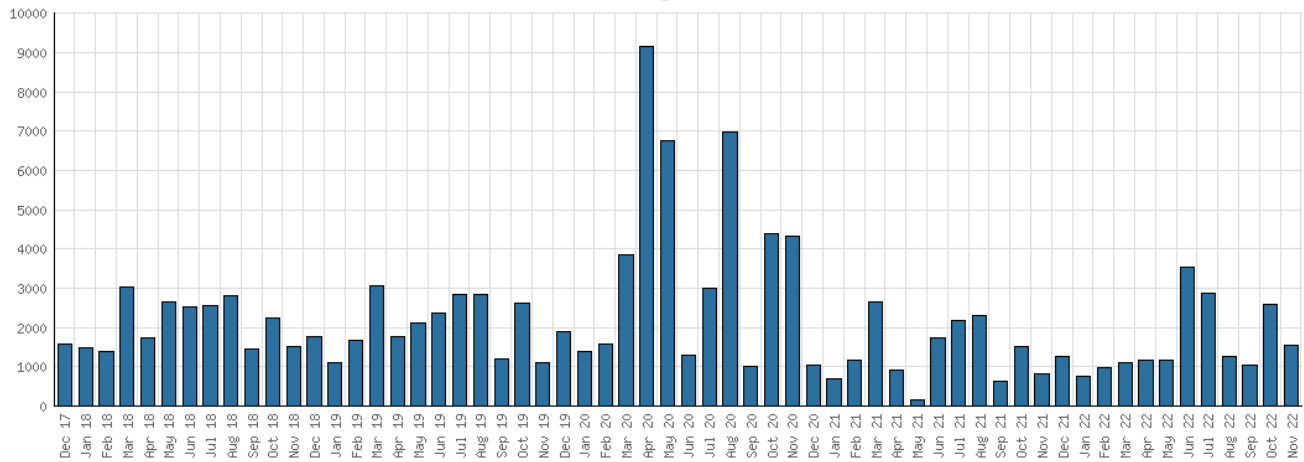
Selected Graphs

5-year Monthly Trends

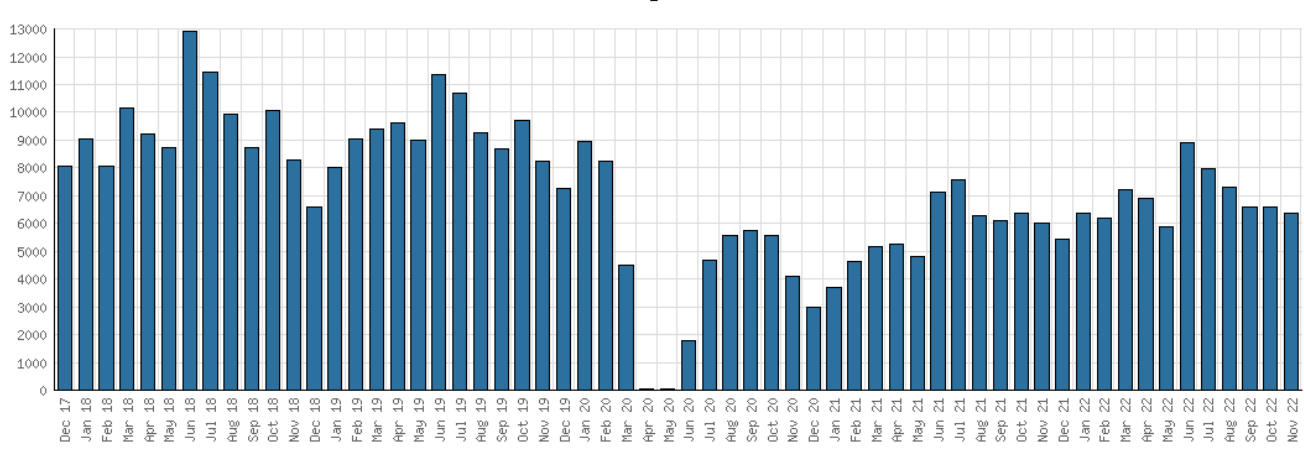
District Attendance



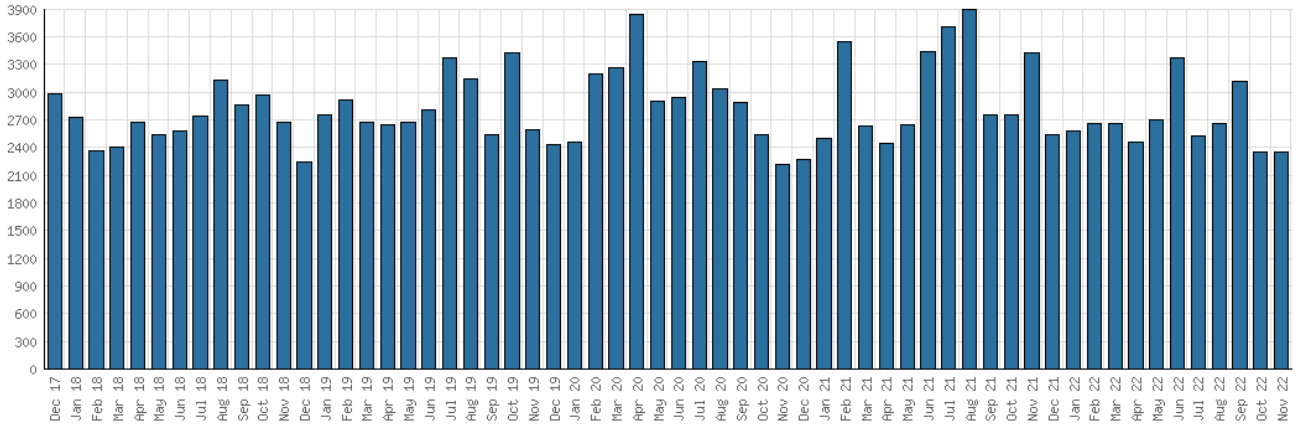
District Program Attendance



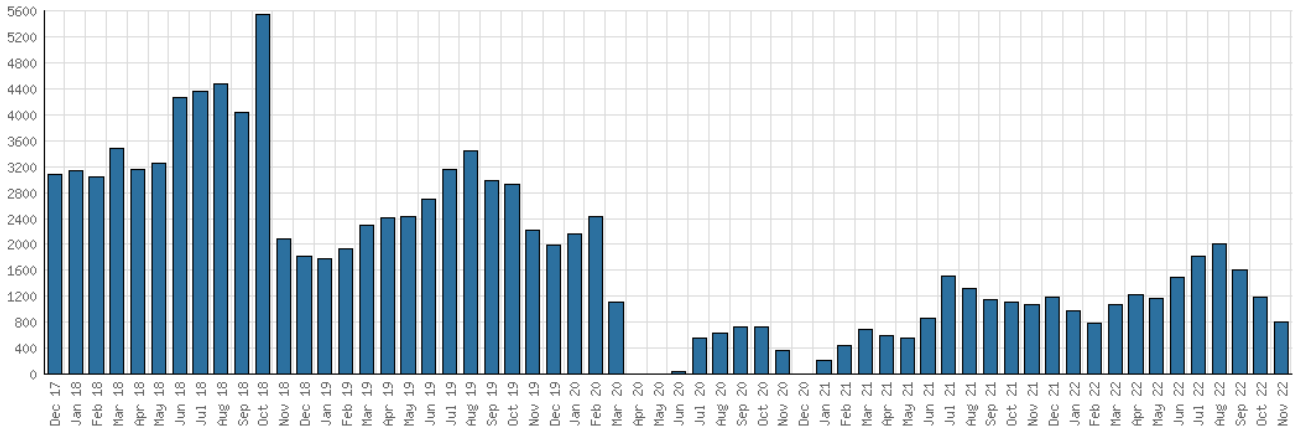
District Physical Checkouts



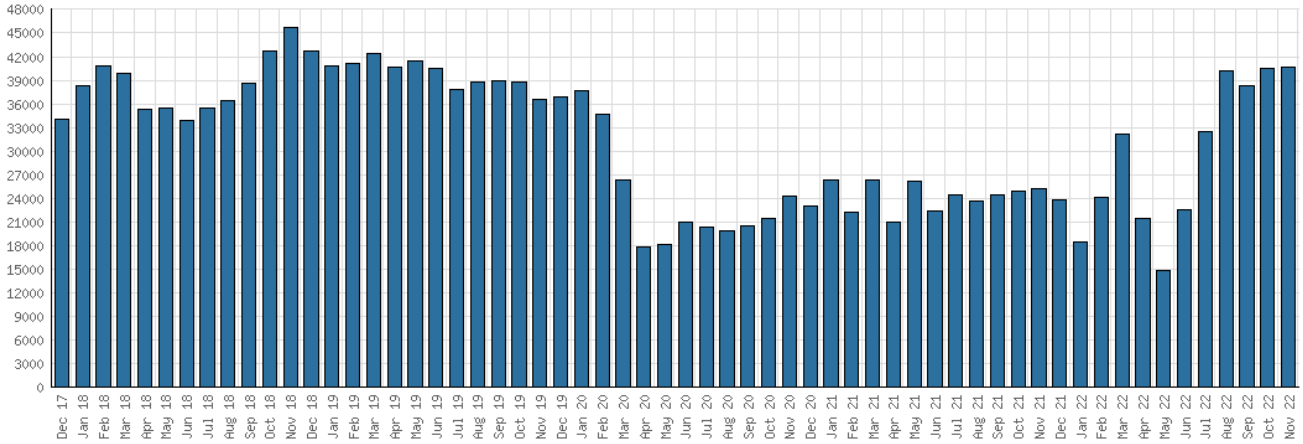
District Digital Usage



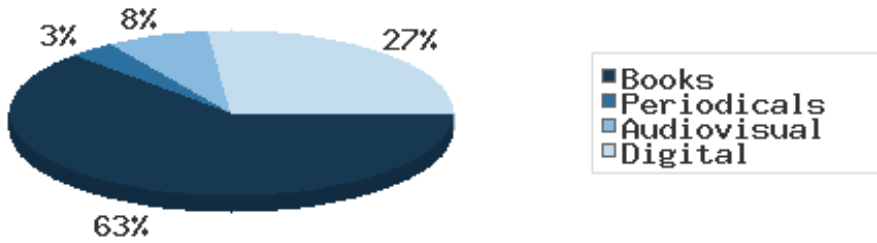
District Use of Library-Provided Computers



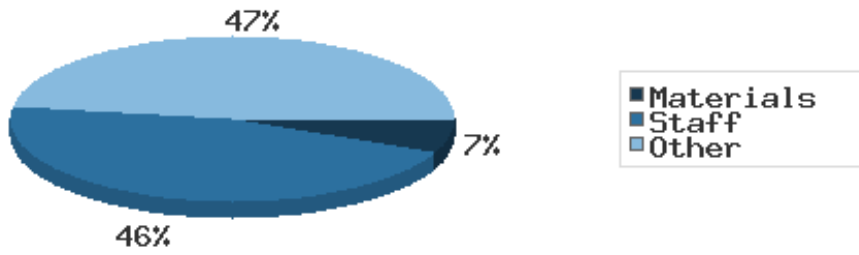
District One-Hour Sessions on Library Wifi



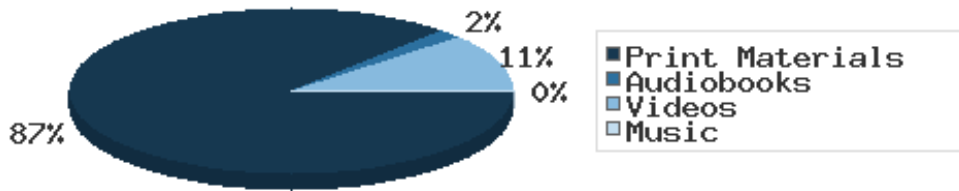
Year-to-Date Materials Expenditures



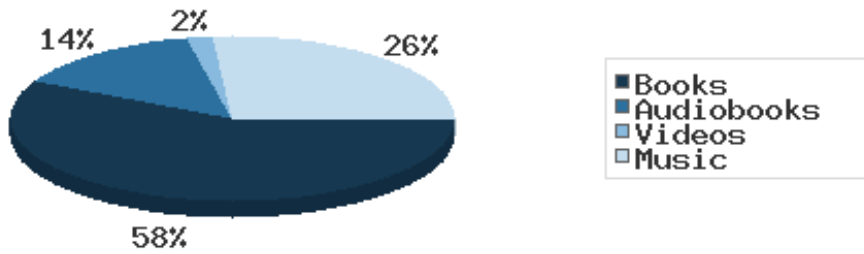
YTD Expenditures in all Categories



Physical Collection



Digital Collection



YTD Usage Breakdown of Digital Services

